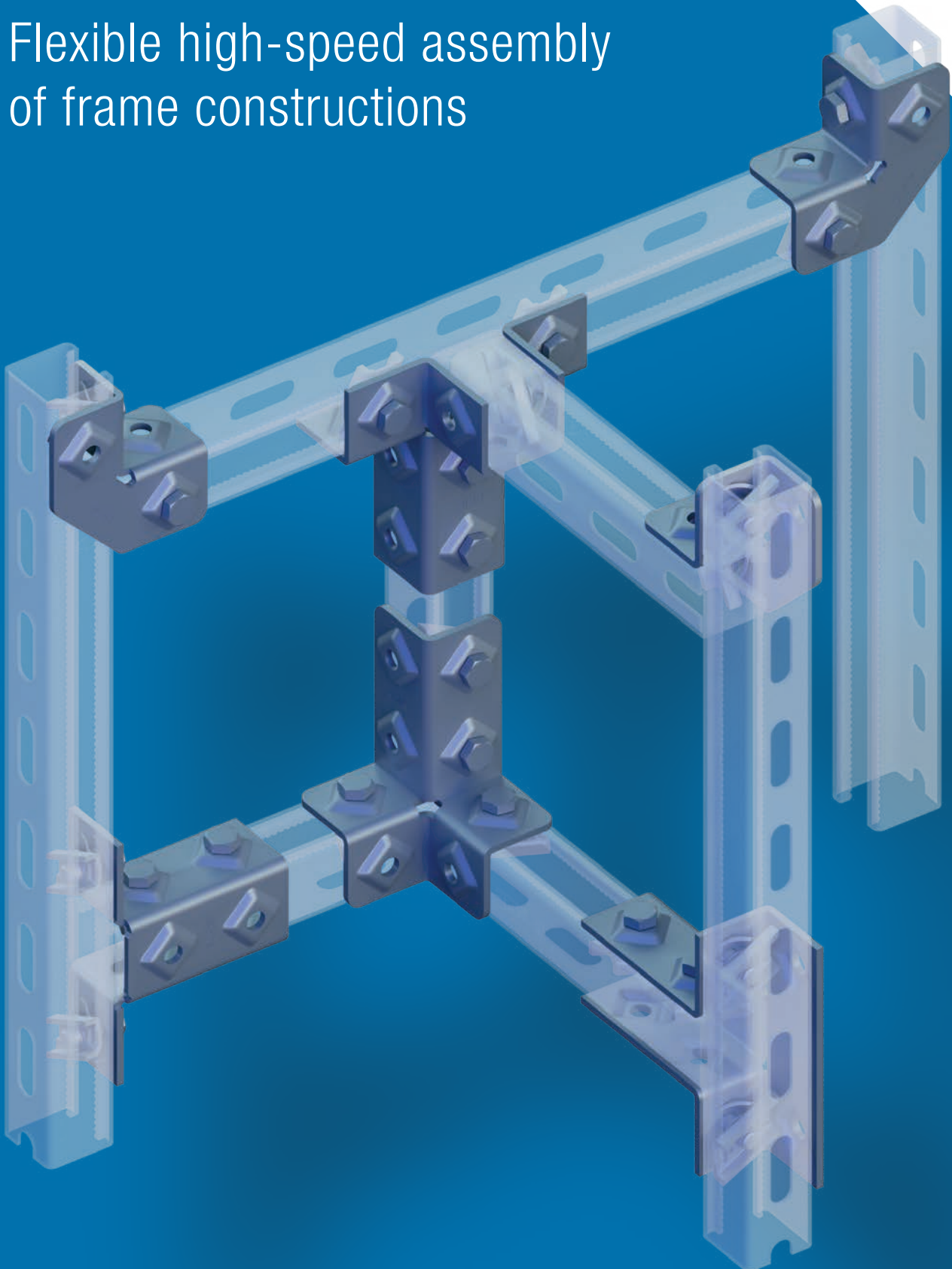


PRESSIX CC 41

sikla

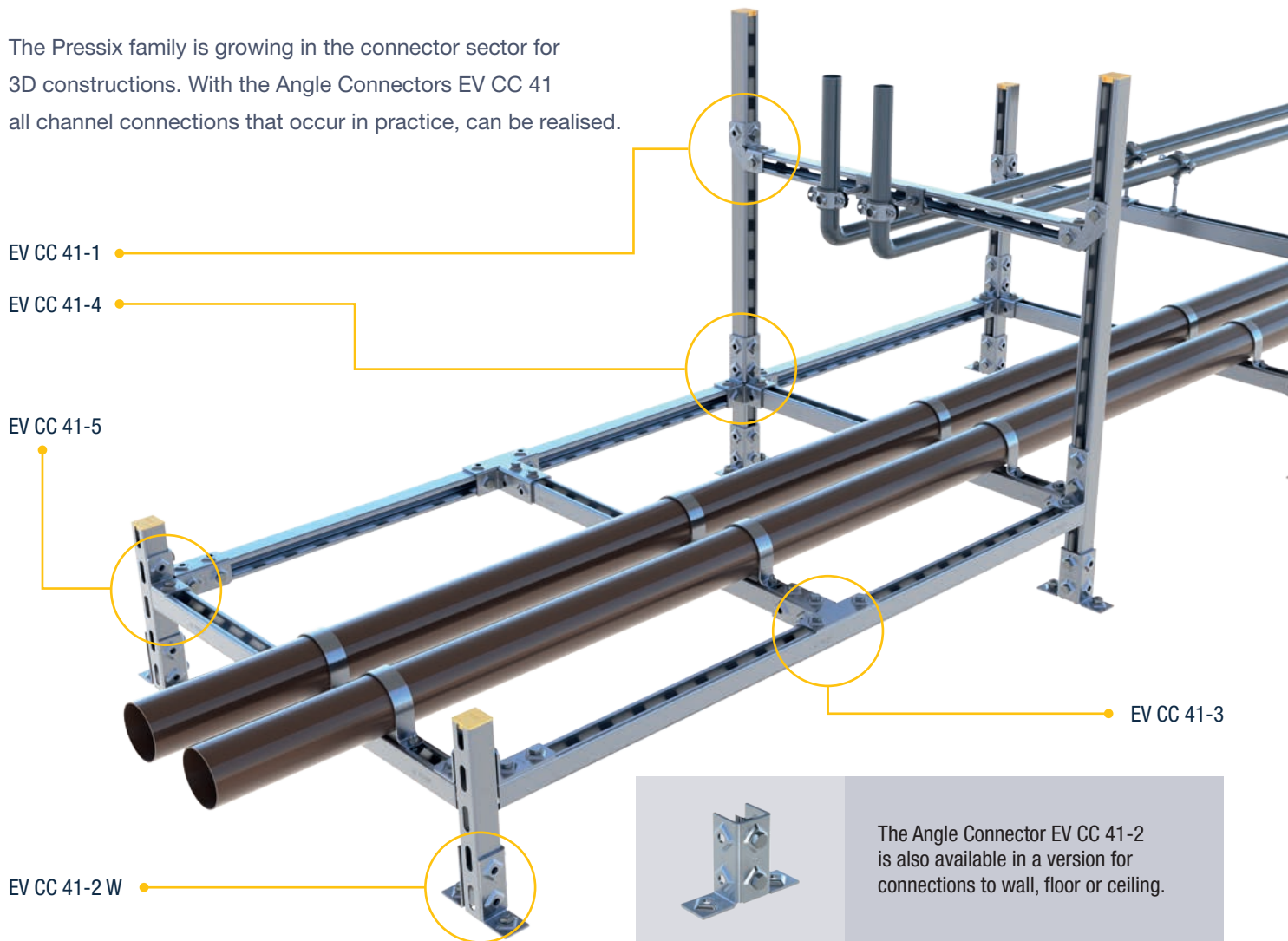
# Angle Connector EV CC

Flexible high-speed assembly  
of frame constructions



# Fast and efficient assembly of three-dimensional frame constructions

The Pressix family is growing in the connector sector for 3D constructions. With the Angle Connectors EV CC 41 all channel connections that occur in practice, can be realised.



## Pressix CC

**The fastest and most efficient connection in the channel assembly!**

The CC connection technology locks automatically by pressing on the screw head and at the same time fixes the dead weight of the component to prevent slipping. The serrated threaded plate in combination with the teeth row of the channel creates a secure, form- and force-locked connection



**1** push in ...



**2** tighten ...



**3** finished!

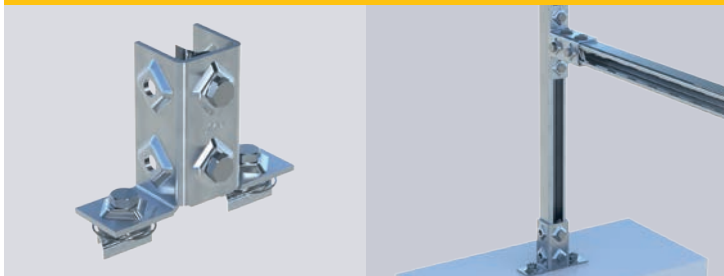
# The products at a glance

With 5 Angle Connectors EV CC  
all channel connections are realised

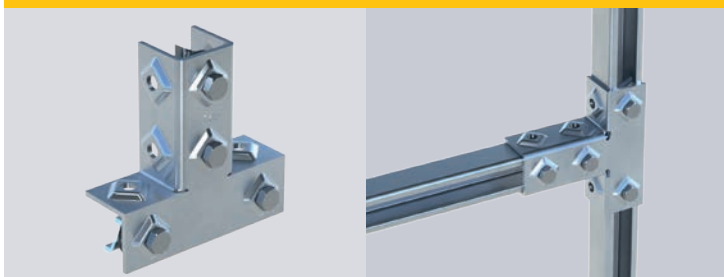
Angle Connector EV CC 41-1



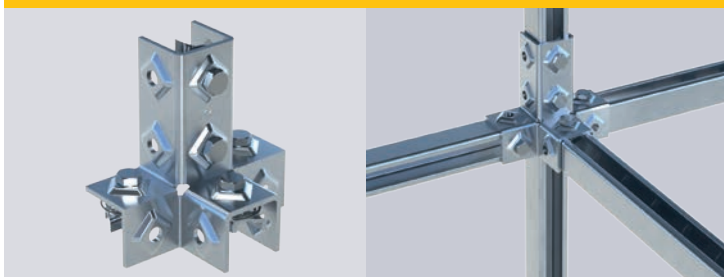
Angle Connector EV CC 41-2



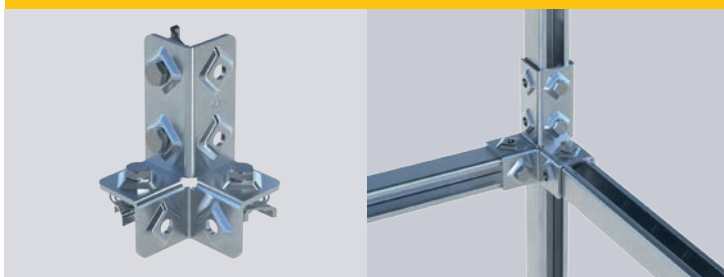
Angle Connector EV CC 41-3



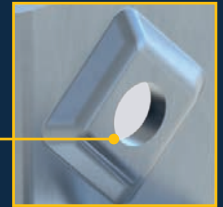
Angle Connector EV CC 41-4



Angle Connector EV CC 41-5



## Increased safety



The embossed Sikla diamond ensures an optimised tension curve in the fixing points. This allows a high tension torque and thus a higher load absorption can be realised. In addition, it prevents component deformation during the assembly process and guarantees a reliable load absorption.

The continuous weld seam of the Angle Connectors EV CC 41-3 and EV CC 41-4 increases the applied moment of the component when erecting trusses.



See for yourself  
and take a look at our  
installation video!

## Benefit from these advantages:

- ✓ Fast and efficient assembly
- ✓ Completely pre-assembled connecting elements
- ✓ Flexible alignment of the rail openings
- ✓ High rigidity thanks to high-strength material and special design
- ✓ HCP version to meet higher corrosion standards (e.g. outdoors)

# Sikla HCP – for higher demands on corrosion protection

The new Angle Connectors are also available in a HCP-Version for outdoor frame construction. The definition „High Corrosion Protection“ - stands for optimal corrosion protection for different connecting elements. HCP-finish is a special kind of coating with one result. Sikla is offering you for the applications in corrosive category C1 up to C4 according to DIN EN ISO 12944 the individual adjusted corrosion protection with the following available coating systems:

- hot-dipped galvanised according to DIN EN ISO 1461 resp. DIN EN ISO 10684
- High Performance corrosion protection consisting of zinc flake coating according to DIN EN 13858 resp. DIN EN ISO 10683
- Innovative zinc-nickel surface coating

**The protective effect of all HCP-coating systems is corresponding at least to the well established hot galvanisation with hot dip metal coating.**

The logo for Sikla, featuring the word "sikla" in a bold, lowercase, sans-serif font. The letter "i" has a small yellow diamond shape above it.

**Sikla GmbH**

In der Lache 17

D-78056 VS-Schwenningen

Phone +49 7720 948 0

[www.sikla.com](http://www.sikla.com)